

# EL-WEM Quick Start Guide

Wireless Indoor Air Quality Monitor

Distributed By MicroDAQ, LLC  
603-746-5524  
www.MicroDAQ.com



Your data, anytime, anywhere

## 1 Set up a Cloud Account

To begin setting up your EL-WEM, you first need an EasyLog Cloud account:

- Visit [easylogcloud.com](http://easylogcloud.com) and click Sign Up Now
- Next, download the EasyLog Cloud App onto your phone or tablet



EasyLog Cloud harnesses the power of IoT to automate data logging and alert notifications. EasyLog Cloud gives you the ability to monitor and manage multiple data logging devices in different locations completely remotely.

The system easily scales to meet your needs. Perfect for everything from compact systems with just a few measuring points to corporate solutions with thousands of devices around the globe.

## 2 Getting to know your WEM

The power button has the following functions:

	Short Press <1s	Long Press Between 1s and 10s	Press and Hold >10s
Function	Turn the device on, force data synchronisation with the Cloud, create audit mark on the Cloud, mutes the sounder if in alarm	Turn the device off	Start CO <sub>2</sub> Calibration Mode (EL-WEM+ only)

### Resetting your EL-WEM

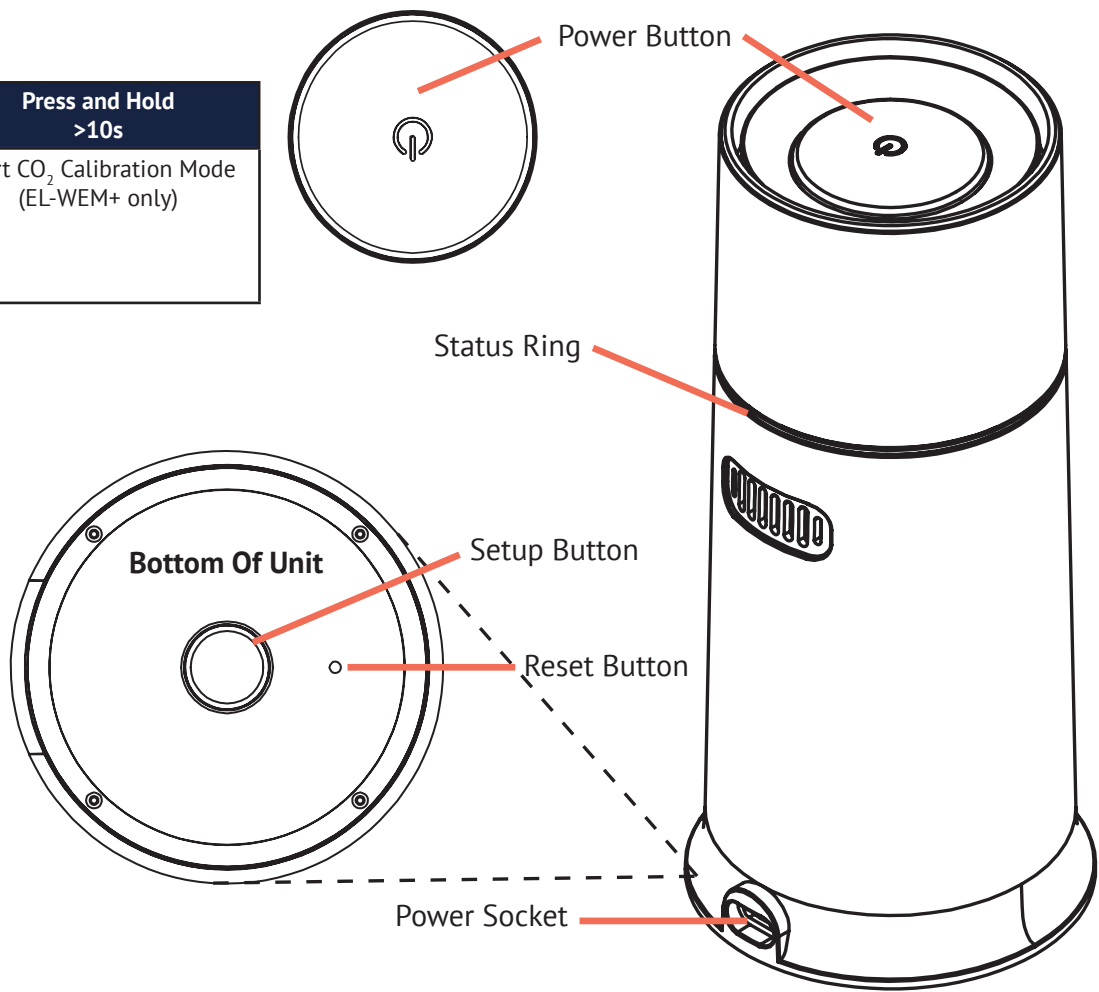
Reset
Done by pressing the Reset Button
<ul style="list-style-type: none"><li>• Device will restart, all stored data and the configuration will be retained</li></ul>
Factory Reset
Done by pressing the Setup Button for more than 10s
<ul style="list-style-type: none"><li>• Erases all stored data</li><li>• Erases all configuration</li><li>• Reverts to default settings and restarts the device</li></ul>

### Setup Mode

Done by pressing the Setup Button for more than 3s
<ul style="list-style-type: none"><li>• For connecting to the Cloud - see Section 4 of this guide</li></ul>



Supply Voltage: 5Vdc, 1A  
IP Rating: IP40



## 3 Turn on your EL-WEM

- 1 Plug in the power supply using the USB cable provided.
- 2 Press the button on top of your EL-WEM to turn it on.
- 3 When you first turn your EL-WEM on, the blue light in the power button will flash. This indicates the EL-WEM is not currently connected to a WiFi network.
- 4 For the first 5 minutes after you turn on your WEM, the sensors self-calibrate. You may not see readings for all the sensors on the Cloud during this time.



### Safety Information

**WARNING:** Failure to follow these safety instructions could result in fire, electrical shock, other injury or damage.

#### Repairing or modifying

Never attempt to repair or modify this product. Dismantling may cause damage that is not covered under the warranty. Servicing should only be provided by an approved supplier. If the product has been punctured, or seriously damaged do not use it and return it to an approved supplier.

#### Power supply

Only use a genuine EL-WEM power adapter to power your EL-WEM air quality monitor.

#### Disposal and recycling

You must dispose of this product according to relevant laws and regulations. This product contains electronic components and therefore must be disposed of separately from household waste.



# EL-WEM Quick Start Guide

## Wireless Indoor Air Quality Monitor

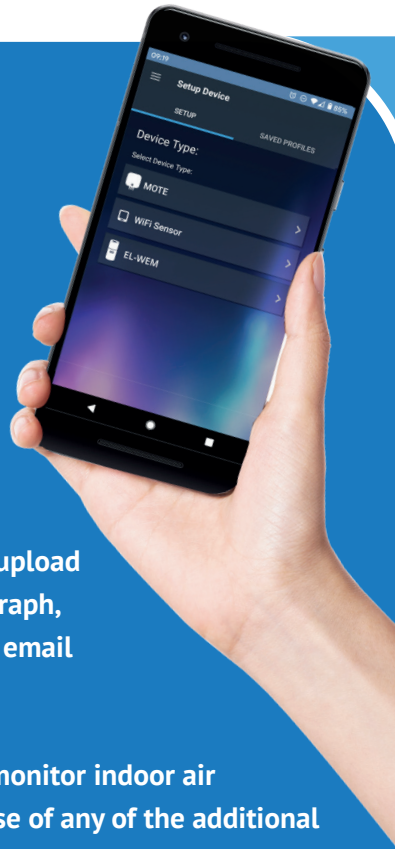
Distributed By MicroDAQ, LLC  
603-746-5524  
[www.MicroDAQ.com](http://www.MicroDAQ.com)



Your data, anytime, anywhere

### 4 Connect to the Cloud

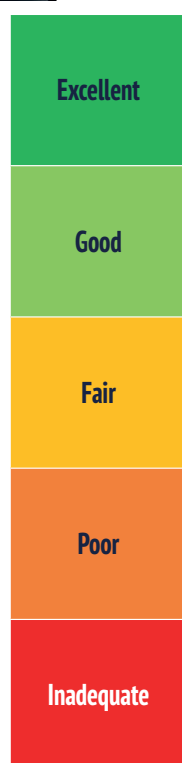
- 1 Log in to the EasyLog Cloud App on your mobile device.
- 2 Select 'Setup Device' and follow the on-screen instructions to configure your EL-WEM. When setup is complete the sounder will beep and the EL-WEM will automatically start monitoring your indoor air quality.
- 3 When connected to the EasyLog Cloud, your EL-WEM will regularly upload data from all the air quality parameters it measures. You can then graph, analyse and share this data and also set automatic notifications via email or SMS to keep you informed at all times.
- 4 If you choose not to connect your EL-WEM to the Cloud it will still monitor indoor air quality levels, but it will not record data and you won't be able to use any of the additional features of the EasyLog Cloud.



### 5 Indoor Air Quality Monitoring

The EL-WEM simultaneously measures a number of different parameters that affect air quality and uses them to calculate an overall Indoor Air Quality (IAQ) level.

There are five levels



The colour of the status ring shows the current IAQ level. If the IAQ is Poor or Inadequate the status ring will turn red and the sounder, if activated, will beep to alert those nearby. If you have configured email or SMS notifications on the Cloud these will automatically be sent to your selected recipients.

### 6 Do Not Disturb Mode

Your WEM contains an alarm sounder that you can activate from the EasyLog Cloud, to give an audible warning if the IAQ level is Poor or Inadequate. There is also an option to set a time period each day when the status ring and sounder are turned off.



### 7 Low Power Mode

The EL-WEM contains a back-up battery that can power the unit if mains power is lost. When running from the battery the EL-WEM goes into low power mode, and will upload data to the Cloud once an hour, although notifications for poor indoor air quality will be sent immediately. It is not possible to enter configuration mode or calibration mode until mains power is restored.

When your WEM is in Low Power Mode you may get 'Connection Lost' notifications from the Cloud (if you have set them up) as in Low Power Mode it doesn't connect to the Cloud as frequently as normal.

**The battery is intended as an emergency backup only and should not be used to power your EL-WEM for long periods.**

The battery cannot be accessed or changed by the user and is recharged automatically when mains power is restored.

### 8 Calibration Mode (EL-WEM+ only)

The carbon dioxide (CO<sub>2</sub>) sensor in the EL-WEM+ is extremely accurate and to maintain this accuracy it should be calibrated every 6 months.

First, provide as much fresh air as possible to the EL-WEM+, for example place it next to an open window. Then press and hold the power button for 10 seconds; the sounder will beep and the status ring will turn white.

The calibration process is automatic and will take a little while; when it's complete the sounder will beep again and the EL-WEM+ will return to its normal monitoring mode. If for any reason calibration fails to complete the sounder will beep 4 times at the end of the process. You should then ensure the supply of fresh air is adequate and restart calibration mode.



### 9 WiFi Network Features

After you've connected the EL-WEM to your WiFi network, if the power button starts flashing again it means the monitor has been unable to connect to the network to upload data. The EL-WEM will automatically try to reconnect, but you should also check if your WiFi network is available. If you want to perform an immediate upload to the Cloud and your network is available, do a short press of the power button. This will create an audit mark in the event record. To reconfigure the WiFi settings (e.g. to change your EL-WEM to use a different WiFi network), press the Setup button on the base of the unit for 3 seconds. This restarts the setup process explained in section 4 above.