

# Quick Start Guide

**Minnow 1.2 T**  
**Minnow 1.2 TH**



# SENONICS

Version 1.0, September 2023

Distributed by MicroDAQ, LLC

(603) 746-5524

[www.microdaq.com](http://www.microdaq.com)



*Datasheet:*

[www.senonics.com/files/MinnowTH\\_Datasheet.pdf](http://www.senonics.com/files/MinnowTH_Datasheet.pdf)

[www.senonics.com/files/MinnowT\\_Datasheet.pdf](http://www.senonics.com/files/MinnowT_Datasheet.pdf)

*User Guide :*

[www.senonics.com/files/MinnowUserGuide.pdf](http://www.senonics.com/files/MinnowUserGuide.pdf)

*Windows Installer*

[www.senonics.com/bin/SenonicsPCApplication\\_Installer.zip](http://www.senonics.com/bin/SenonicsPCApplication_Installer.zip)

*Mac Installer*

[www.senonics.com/mac-installer.html](http://www.senonics.com/mac-installer.html)

# Logger Configuration

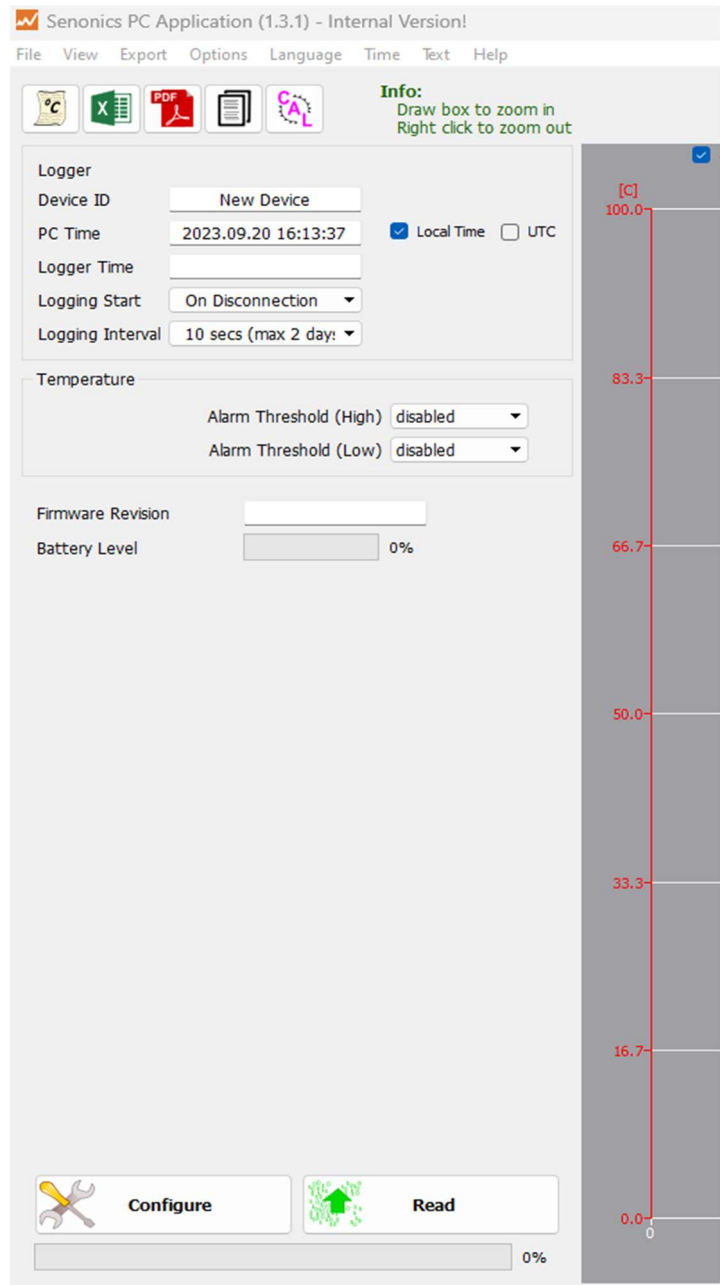
Connect the Minnow 1.2 logger to your PC or Mac.

Start the Senonics Application.

Configure the options in the configuration pane -for example, logger ID, logger start, logger interval etc.

Finally press the "Configure" button to configure the logger. This will take a few seconds to complete. At this point your logger can be disconnected from the PC or Mac for use.

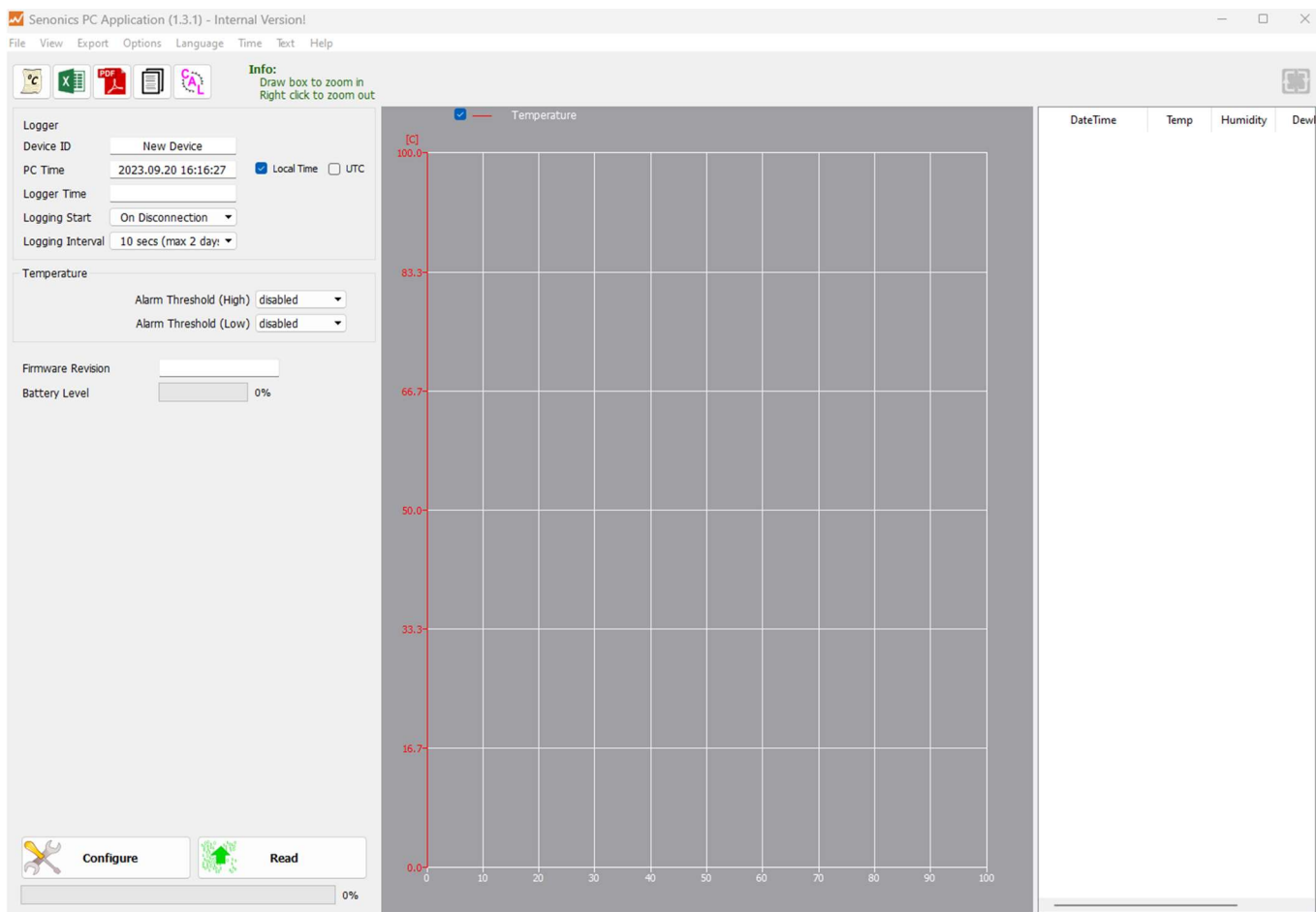
Other more advanced configurations described in the User Guide.



# Reading Data

Connect your logger to a PC or Mac and restart the Senonics Application. Press "Read". All data from the logger will then be contained within the

GUI.



## Battery

Minnow 1.2 logger runs on a standard CR2032 coin cell battery.

To replace the battery, first remove the Minnow 1.2 back-cover by unscrewing the four screws (#1 Philips) at the rear of the logger. Remove the PCB and replace the battery. Re-insert the PCB, re-attach the cover and tighten the fastener screws again being careful not to over tighten. Be sure to Re-Configure your logger right away, as the battery will drain if not configured.

