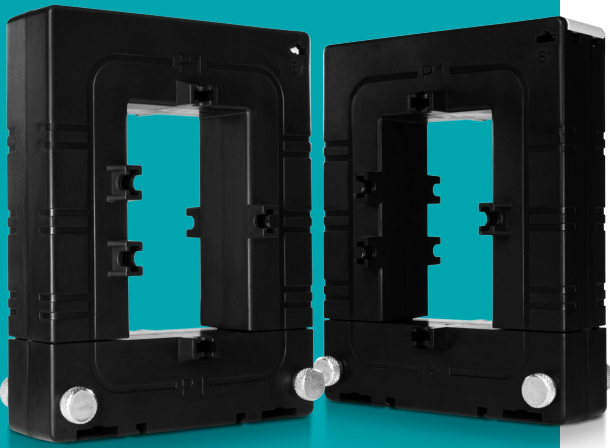


AcuCT 5A Series

AcuCT-2031

5A Split-Core Current Transformer Datasheet



The AcuCT 5A Series is a rugged, compact split-core current transformer designed with an either 1A or 5A industrial output. Choose from multiple sizes & input ranges to adapt to a variety of special project requirements. The helpful split-core design is easy to install and does not require disconnection of cables or wires.

Features

- Revenue grade accuracy: IEC 61869-2 Class 0.5s (from 5% - 120% of rated current)
- Choose from 1A or 5A industrial standard output
- Split-Core design streamlines installation
- Included accessories provide multiple mounting options
- UL Recognized



Accuenergy Inc.

Los Angeles - Toronto - Pretoria

North America Toll Free: 1-877-721-8908

Web: www.accuenergy.com

Email: marketing@accuenergy.com

Revision Date: August 2023 Version: 1.0.2
Specs Subject To Change Without Notice.

Distributed by MicroDAQ, LLC

(603) 746-5524

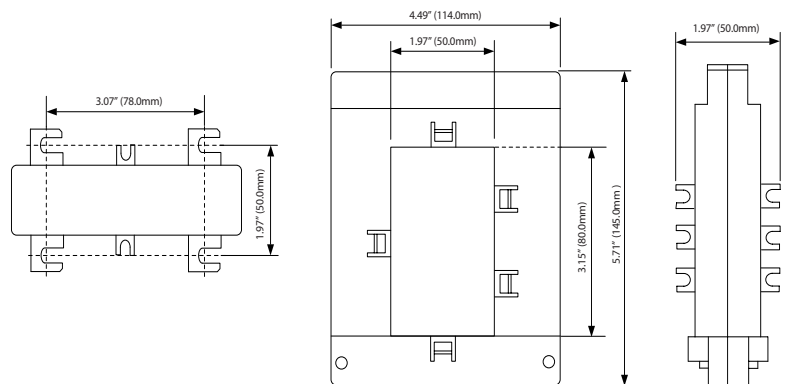
www.microdaq.com

ACCUEnergy

Specifications

RATED CURRENT	
Current Range	400A, 600A, 800A, 1000A
Output	5% - 120% of rated current
Output	5A, 1A
Accuracy	IEC 61869-2 Class 0.5s
MECHANICAL/ENVIRONMENTAL	
Form Factor	Split-Core CT
Window Size	50.0mm x 80.0mm (1.97" x 3.15")
Exterior Dimensions	114.0mm x 145.0mm x 50.0mm 4.49" x 5.71" x 1.97"
Case Material	UL 94V-0 rated flame retardant
Lead Wires	Terminal Output
Operating Temperature	-15°C to 60°C / 5°F to 140°F
Operating Humidity	Non-condensing, 0 to 95% RH
Installation Conditions	Indoor Use
ELECTRICAL	
Wire Polarity	Terminal Output
Phase Orientation	Arrow Points Towards Load
Frequency Range	50-400Hz
Burden	400A: 2.5VA / 600A: 2.5VA / 800A: 5VA / 1000A: 5VA
SAFETY/COMPLIANCE	
Withstand Voltage	3.0KV/1mA/1min
Rated Voltage	600VAC
Certifications	CE, RoHS, cURus (E359521)

Dimensions



Ordering Information

			Rated Input	Rated Output
Ordering Number	AcuCT- 2031	-	:	
Ordering Example	AcuCT- 2031	-	600	: 5
			400: 400A	5: 5A
			600: 600A	1: 1A
			800: 800A	
			1000: 1000A	