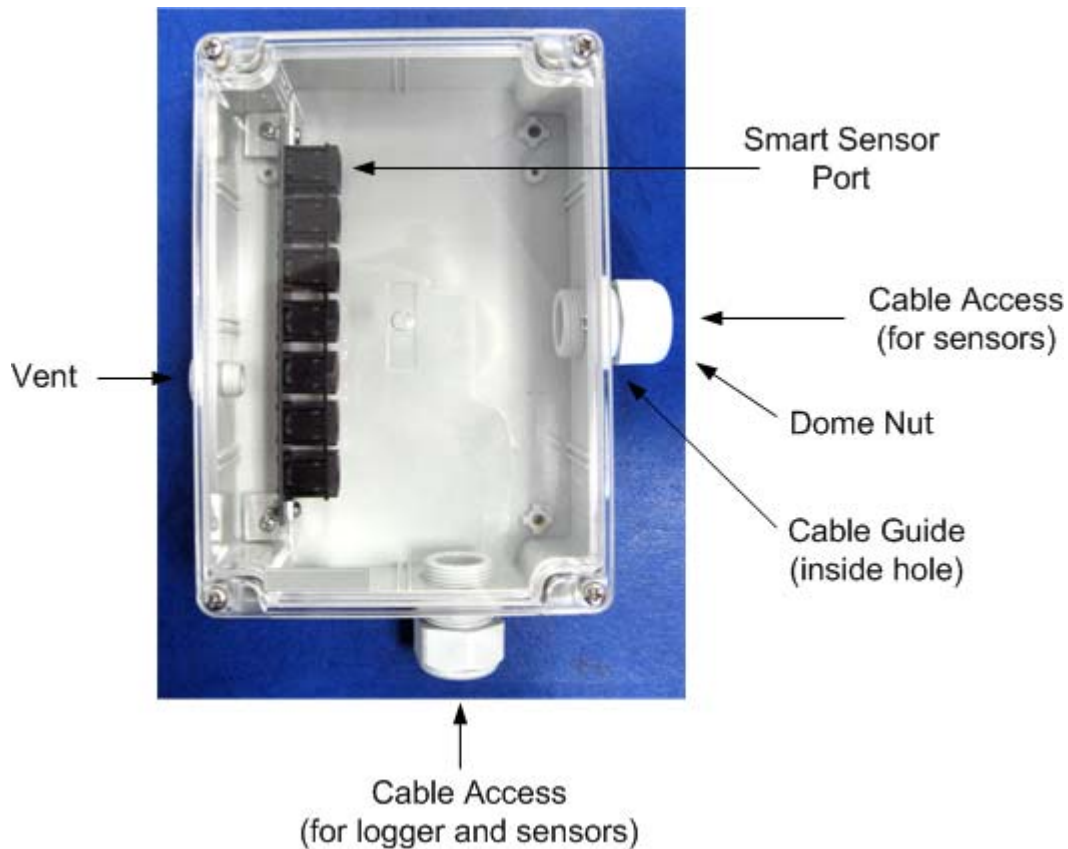


Smart Sensor Adapter Case (Part # S-ADAPT-6)

for HOBO® U30, H21, and H22 Loggers

The Smart Sensor Adapter Case allows you to connect up to six smart sensors in a moisture-resistant enclosure to a single smart sensor extension cable back to a U30, H22, or H21 logger. The case is tested to NEMA 4X (IP65) Standards for protection from corrosion, wind-blown dust and rain, splashing water, and hose-directed water.



Items Included

- 1 - Case
- 1 - Plastic Case Cover
- 4 - Mounting feet
- 4 - Small Philips-head screws (for attaching mounting feet to case)
- 4 - Long Philips-head screws (for attaching case to wall)
- 6 - Cable Guide Plugs

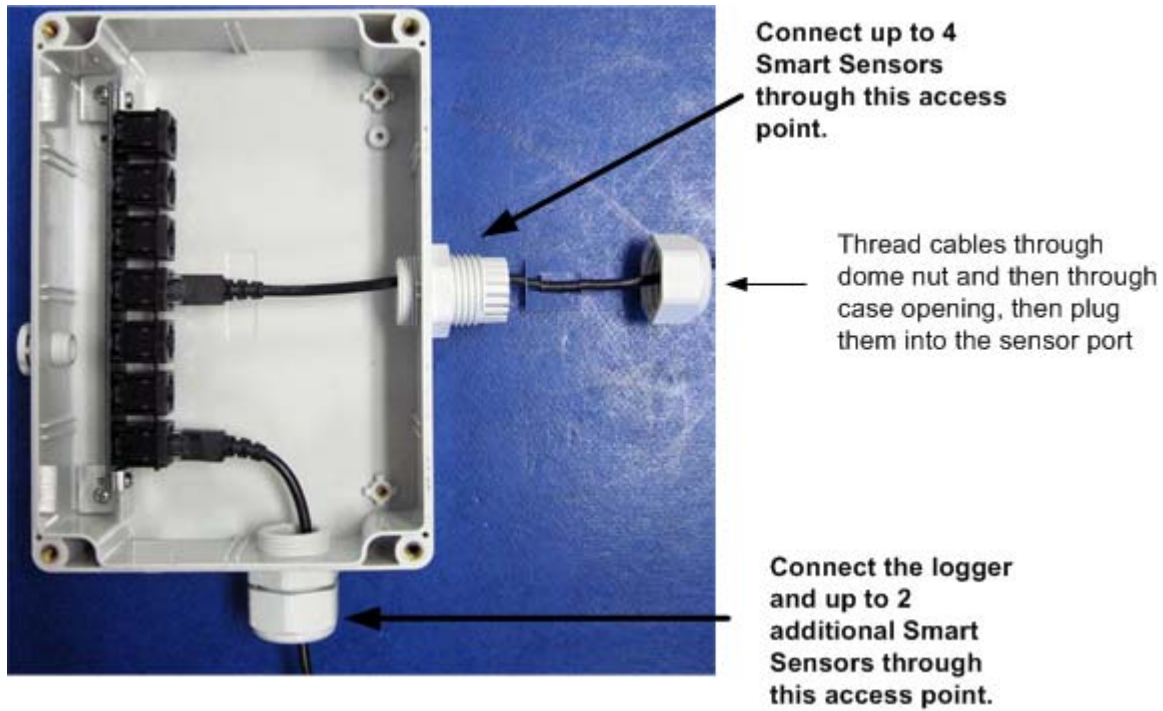
© 2008 Onset Computer Corporation

Part #: MAN-S-ADAPT-6

Doc #: D-12441-A

Assembly Instructions

This section explains how to connect Smart Sensors in the case, including the tools required for assembly.



Items required

To complete the assembly, you will need the following items:

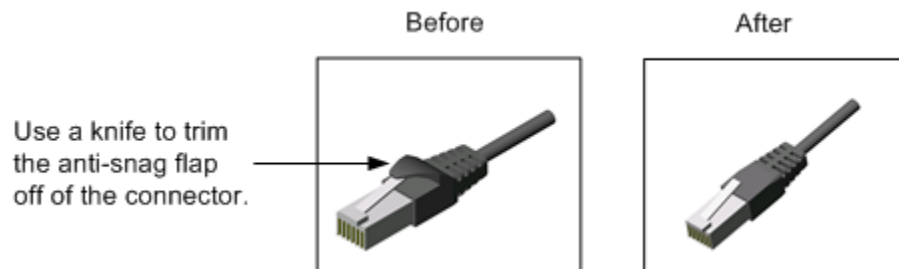
- Phillips head screwdriver
- Pen, pencil, or other blunt instrument (for removing cable guide)
- Adjustable 8 inch or 10 inch crescent wrench (for tightening dome nut)
- Utility or pocket knife (for removing anti-snag flap on connector and cutting cable guide)

Steps

Follow this procedure for each access point in the case.

1. Remove Anti-Snag Flap on Cable Connector

Some sensors have an anti-snag flap on the connector, as shown below. If your sensor has this flap, remove it with a knife so that the sensor connector can fit through the cable access hole in the case.



2. Unscrew the dome nuts from the cable access points.

3. Remove rubber cable guides from the cable access points.

You may need to push the cable guide out using a pen (capped end), pencil (eraser end), or other blunt instrument.

4. Cut slices into the cable guides for each sensor and the logger you will be connecting to the port.



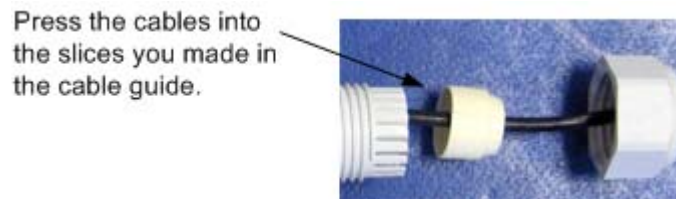
5. Slide sensor cables through the dome nut and then through the opening in the case.

The threaded side of the dome nut should be facing towards the connector.

6. Plug the cables into the Smart Sensor port.

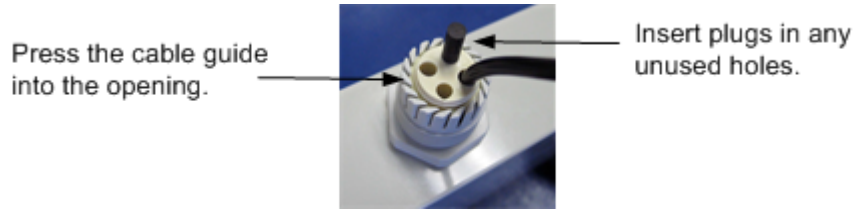
Adjust the cable length as necessary so there is no excess cable inside the case.

7. Position the cable guide near the opening and press the cables into the slices in the cable guide.



8. Push the cable guide back into the case opening.

Pushing the cable guide in at a slight angle and with a slight twist may help it slide in more smoothly. Insert plugs into any unused holes in cable guide.



9. Screw the dome nut onto the case.

Tighten by hand, and then an additional $\frac{1}{2}$ to $\frac{3}{4}$ turn with an adjustable wrench. The dome nut must be very snug.

10. Screw the clear cover back onto the case.

Use a Phillips-head screwdriver to tighten the four cover screws.

Mounting

You can mount the case to a wall or other location for a permanent installation, with or without the mounting feet included with the case.

With Mounting Feet

1. With a slotted screwdriver, screw the mounting feet onto the back of the case as shown below using the short flat-head screws in the mounting kit provided with the case. There are holes pre-drilled on the back of the case for attaching the feet.
2. Once the feet are attached, screw in the longer screws through the holes in the mounting feet to the wall (or other location).



Without Mounting Feet

1. Remove the cover from the case.
2. There are four holes next to each of the four screw holes used to attach the clear cover. Screw in the four long Phillips-head screws through the inside of the case to the wall (or other location).
3. Replace the cover.

© 2008 Onset Computer Corporation. All rights reserved.

Onset and HOBO are registered trademarks of Onset Computer Corporation.