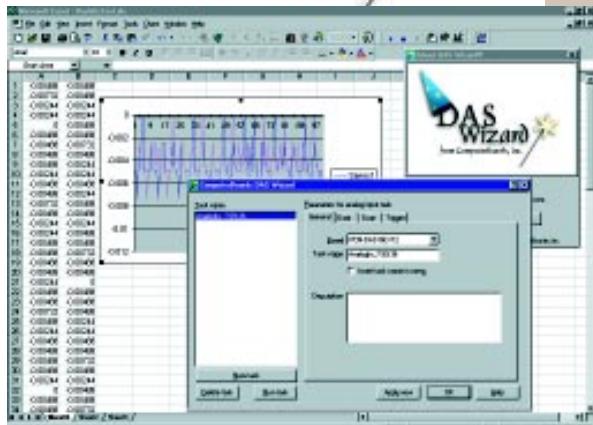




Data Acquisition Direct to Excel



Data Acquisition, On-Line Manual, Examples, in fact, everything you need to take measurements directly to cells in Microsoft Excel.

DAS-Wizard

Data acquisition direct to Microsoft Excel worksheets using any ComputerBoards or compatible DAS board for PCI, PC-Card, ISA or PC104.

Automate measurement and control using VBA. Add exciting user interface, graphing and charting integrations with the VIX-Components DAS-Wizard PRO option.

Easy to use single screen interface to I/O and Excel setup.

No data conversion required. Measurements go directly to cells as volts, temperature or A/D counts

Specifications

Full speed data acquisition
Data size limited only by Excel spreadsheet size
Excel 97, 95
Windows 95, NT

Applications

Analog Input/Output
Digital Sensing & Control
Temperature Logging
Laboratory Experiments
Product Test & Verification
Research & Development
Quality Control
Education

Data Acquisition Direct to Microsoft Excel

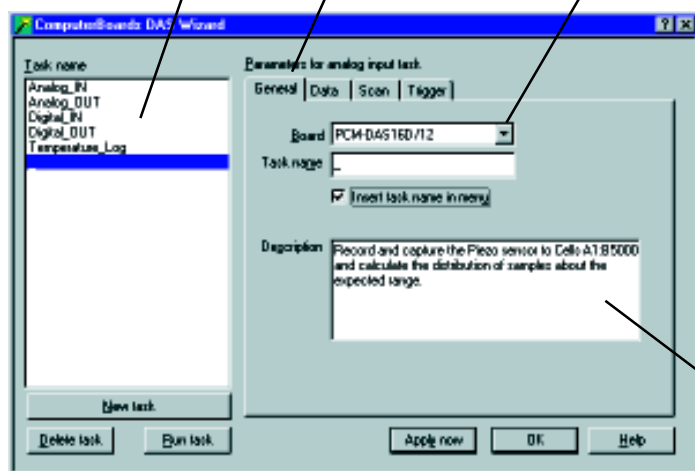
DAS-Wizard is an Add-in for Excel that controls your ComputerBoards or compatible data acquisition board and places your measurements directly into the cells of an Excel worksheet. A simple dialog box allows you to configure the data acquisition board and set the range of cells to place measurements in.

Surveys repeatedly show that Excel is the preferred software for analysis of measurements. Typing those measurements into a spreadsheet is time consuming and error prone. Writing a conversion program requires programming skills. With DAS-Wizard your measurements go directly to Excel cells in a spreadsheet. The data can be in the format of A/D counts, volts or temperature. A/D counts may be converted into any type of engineering units using the formulas in Excel, which you already know how to use.

One dialog box with 4 tabs is all you need to learn, then you're taking measurements!

The name you assign, such as Analog IN appears here.

Choose which board to use here.



Choose a board and a function. Give the function a name and description.

As Easy as ...

DAS-Wizard is easy to use. First choose the type of acquisition or control you want to execute. The choices are:

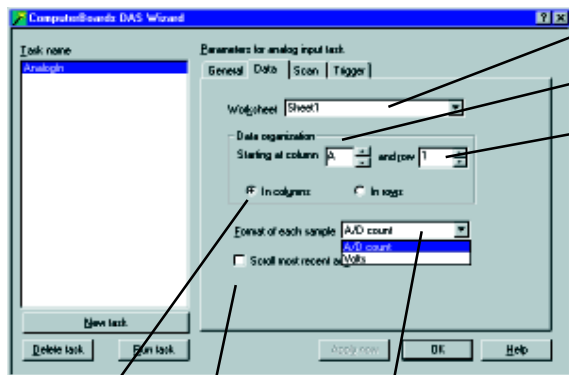
Analog Input or Output
Digital Input or Output
Temperature Logging

The choices available will be limited to the features available on your data acquisition board.

Give your choice a custom name, provide a description (which can be saved with the spreadsheet) if you want to.

You may provide a complete description of the connection or sensors here.





Select the worksheet to place data in.

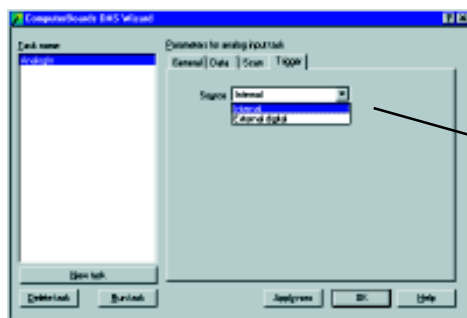
The starting column, and

The starting row.

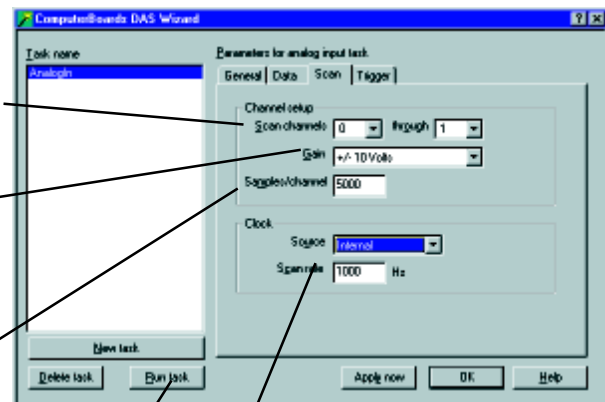
Should the data be in Columns, or Rows?

The format of the data may be A/D converter counts, Volts or Temperature in F, C or K

The worksheet can scroll to show each cell as the measurements are recorded, or it may be held in one place.



This DAS16 supports internal and external triggers. DAS-Wizard shows your choices.



Select the start and stop channel

The volt range is chosen here

The number of samples per channel times the number of channels equals your total sample set.

Sample rate may be internal clock or externally clocked. If internal, you choose the rate here.

NOW, JUST PUSH THIS BUTTON TO MAKE MEASUREMENTS DIRECT TO EXCEL!

That is all there is to it. You are fully trained to begin making high quality measurements direct to Excel with ComputerBoards measurement hardware and DAS-Wizard.

DAS-Wizard PRO adds VBA ActiveX Controls!

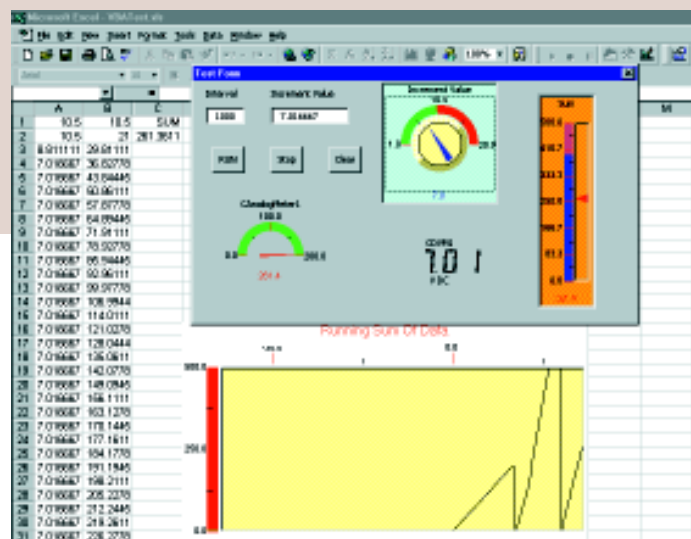
DAS-Wizard PRO includes the complete DAS-Wizard data acquisition to Excel spreadsheets program, plus the VIX-Components ActiveX controls. This exciting combination allows you to create beautiful and instructive control panels, moving strip charts, oscilloscopes and meters. Control panels can have switches, buttons, knobs and sliders, all with programmable limits.

VBA = Visual Basic for Applications

Microsoft has created a Visual Basic back end for all of its office applications, beginning with Office 97. VBA allows you to write programs in easy to use Visual Basic and embed those programs in your spreadsheets, databases and documents. With very little programming required, you can add ActiveX controls directly onto a spreadsheet, like the scrolling strip chart shown here in yellow. You can also open up the VBA development area behind the spreadsheet and create VBA forms, like the control panel shown. The form can be launched by the spreadsheet user with a single mouse click!

Automate Complex DAS and Analysis

Your VBA form or controls on the spreadsheet will activate DAS-Wizard and acquire data. Acquisition parameter can be set programmatically by your user through the control panel you create. Imagine how much value you can deliver to your applications and all on the standard in spreadsheets, Excel.



Create control panels and moving charts to liven up your spreadsheet!

Order

DAS-Wizard

Easy to use Excel Add-in for USB, PCI, ISA, PCMCIA and PC/104 Data Acquisition boards
\$149